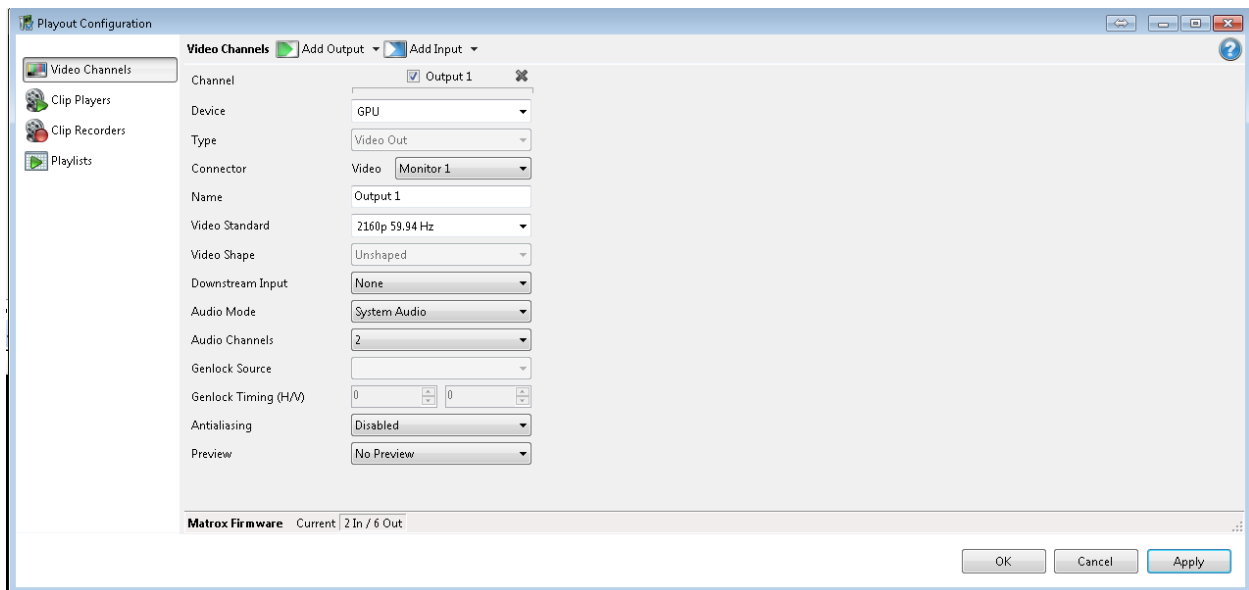


PRIME

# Display Matrix Configuration

Version 2.5

## 1. Hardware Configuration needs to be setup initially as shown below

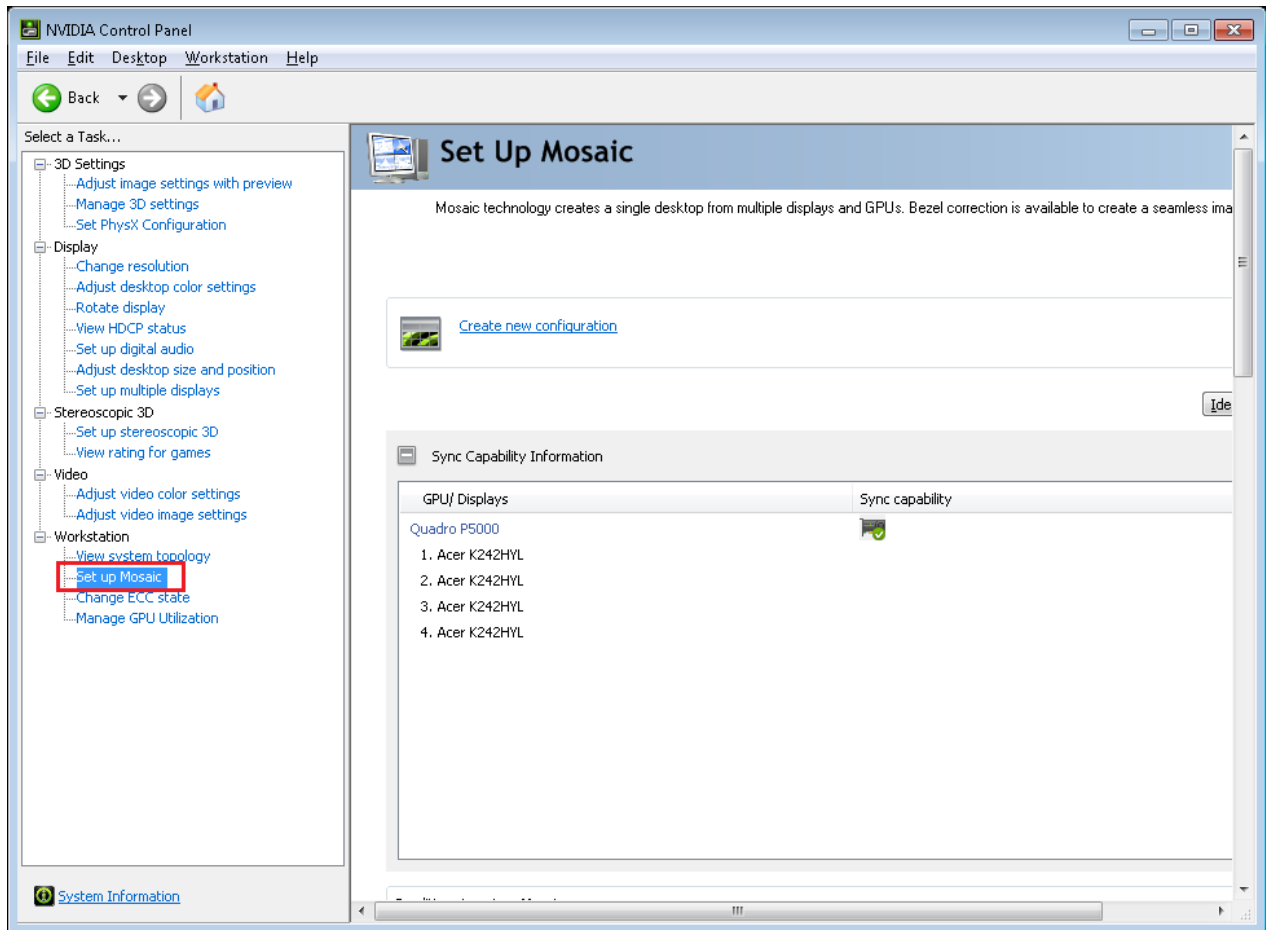


*Please note the Video Standard resolution is nonstandard.*

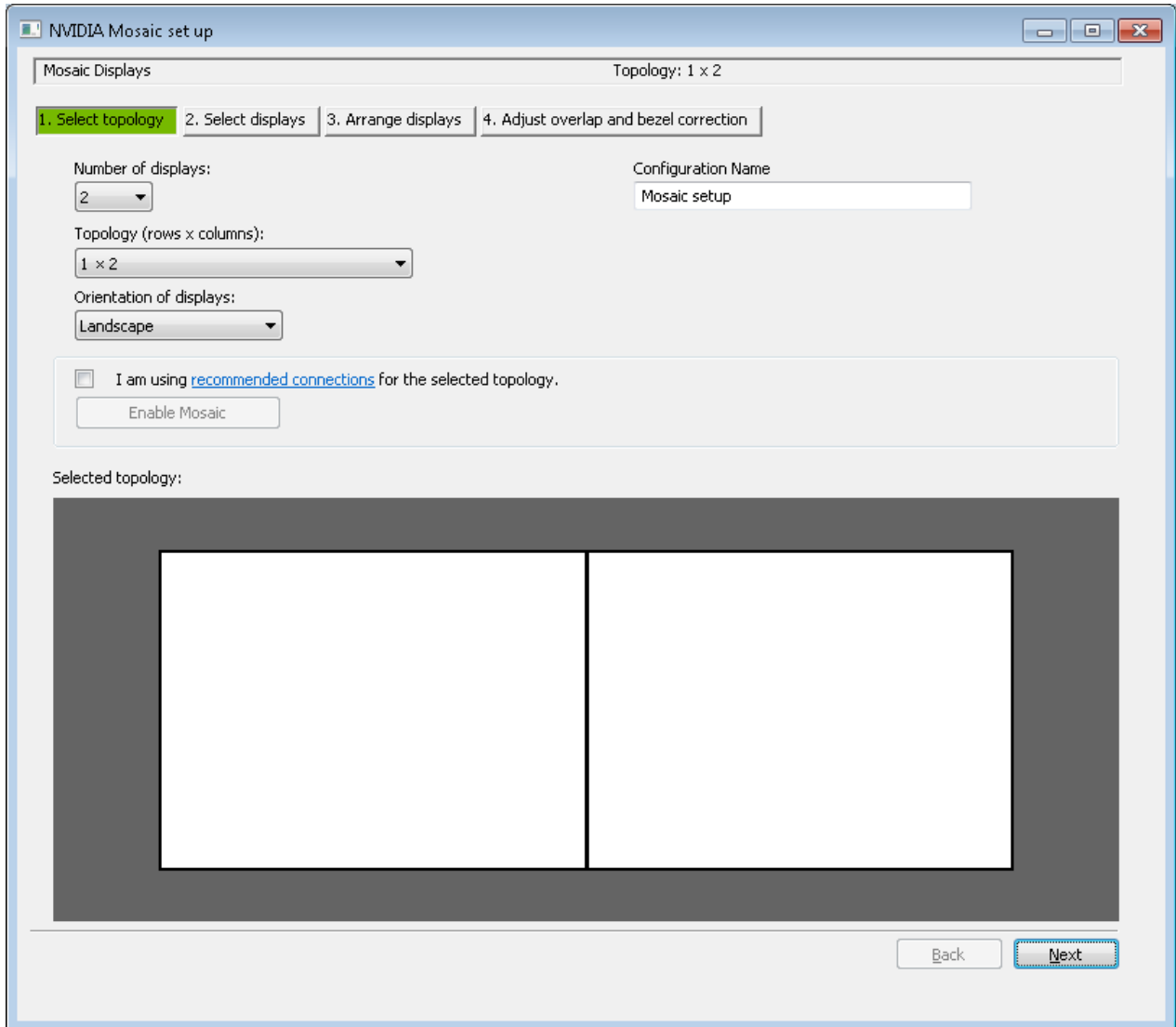
With this Setup, it allows us to configure 1 GPU across 4 Monitors Maximum

## 2) Setting Up Display Matrix Mosaic

Launch Nvidia Control Panel and Click on Set up Mosaic as shown below

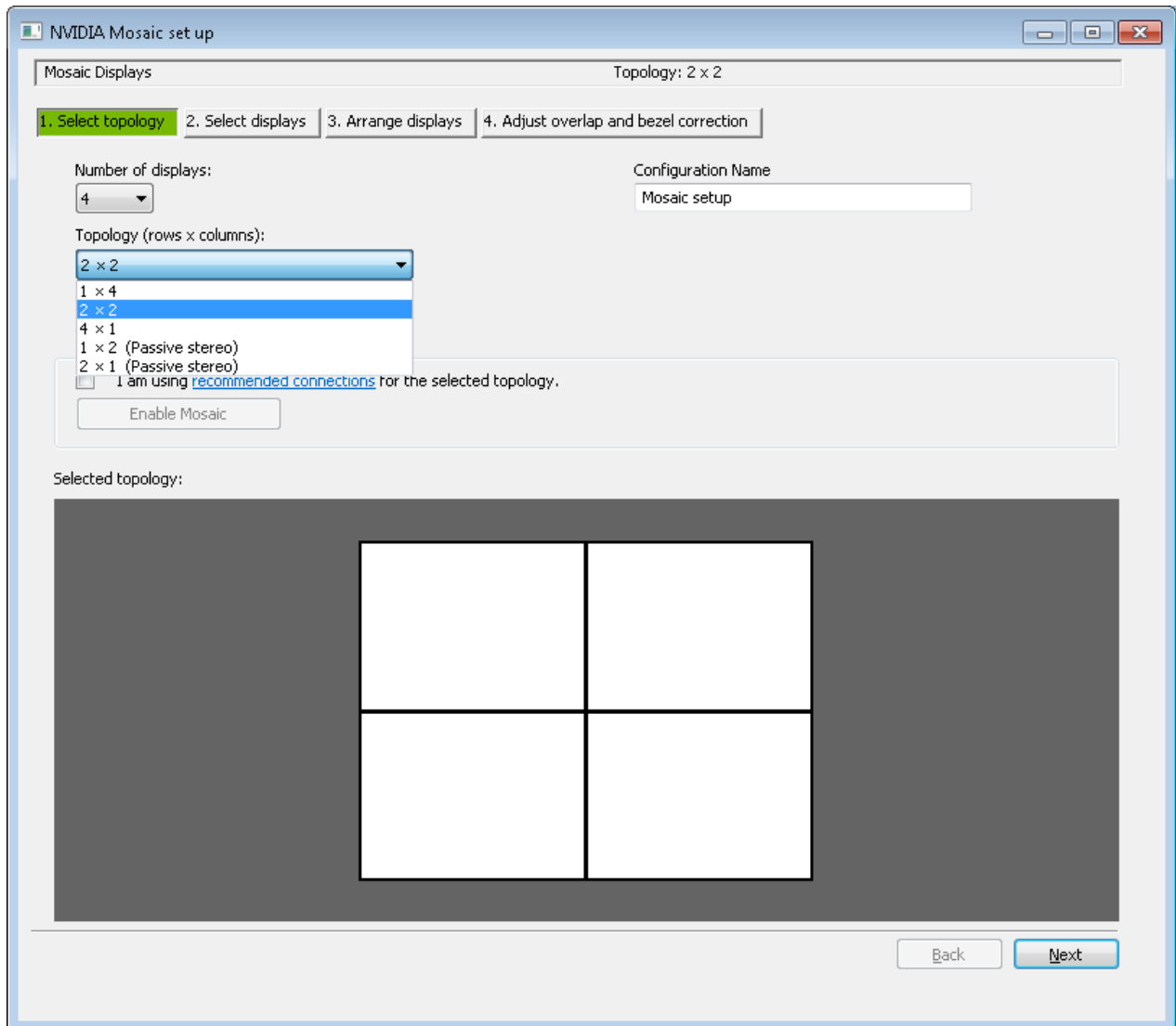


Click on **Create New Configuration**, that opens Nvidia Mosaic Setup Window as shown below



Select Number of Displays and Topology one would like to set up along with Configuration Name

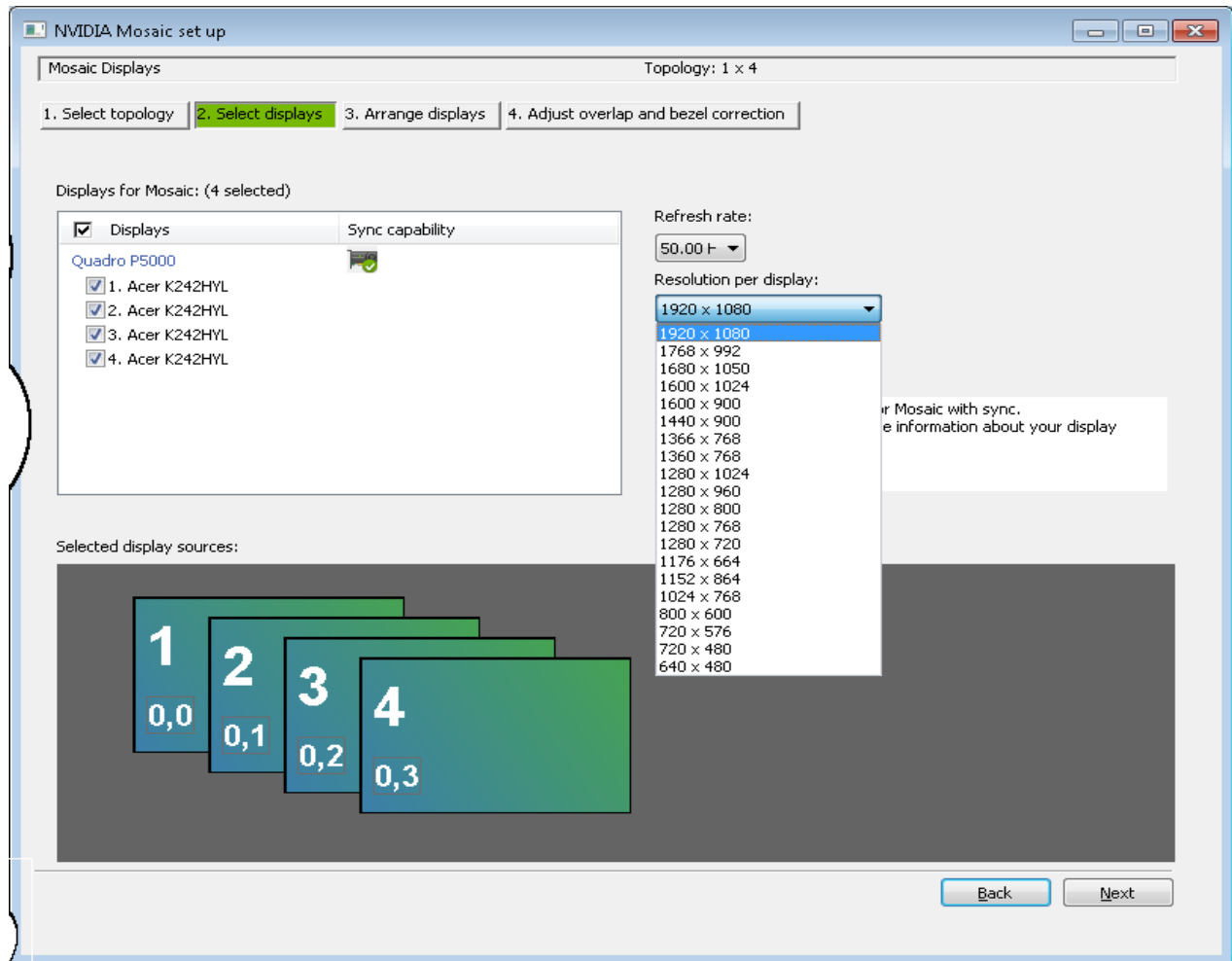
\*Following example shows Number of displays : 4 ; Topology : 2x2



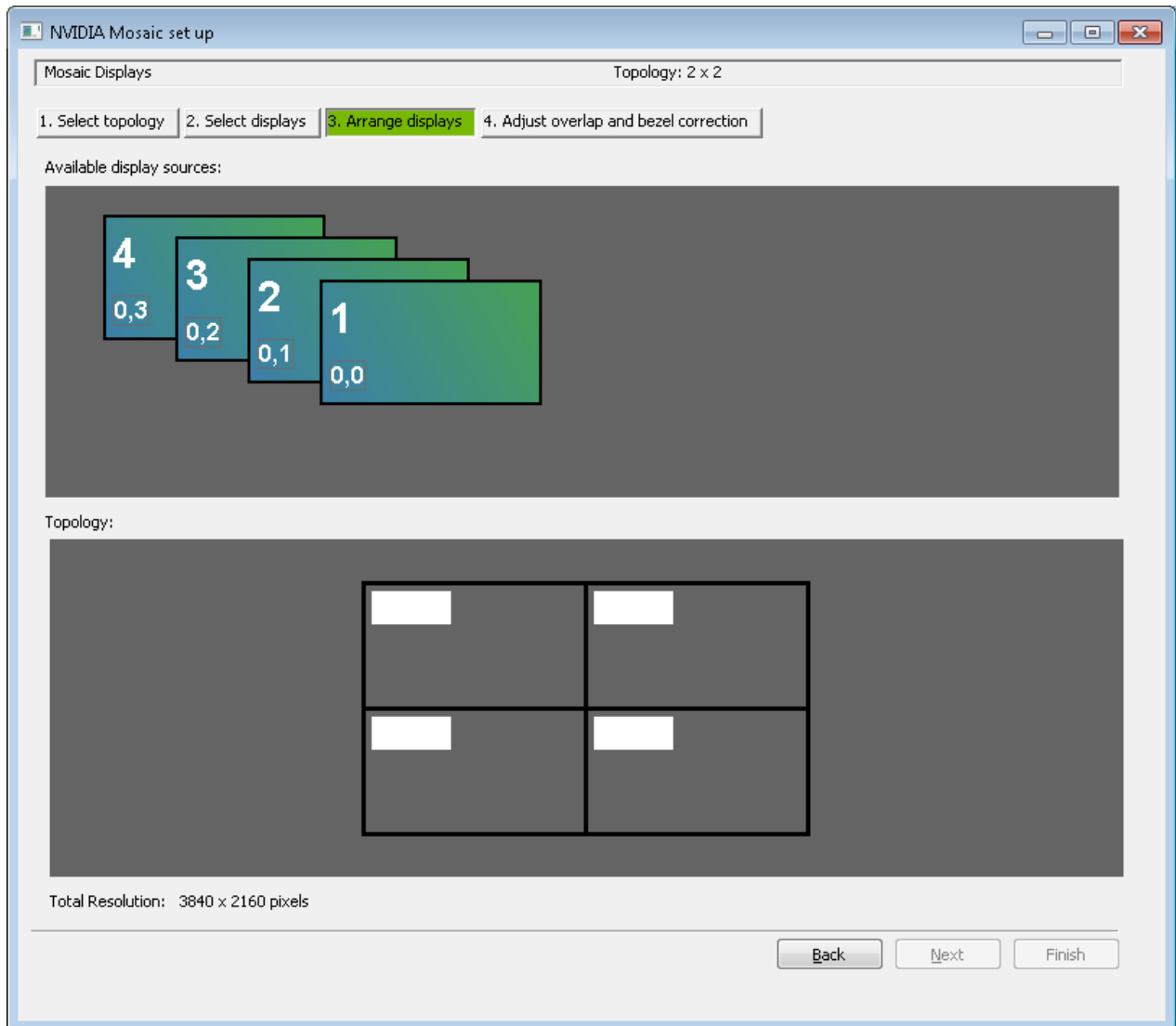
Click **Next** and Select Displays that you would like to use in this topology on the next page

Refresh Rate and Resolution per display can be set here using their

respective dropdowns

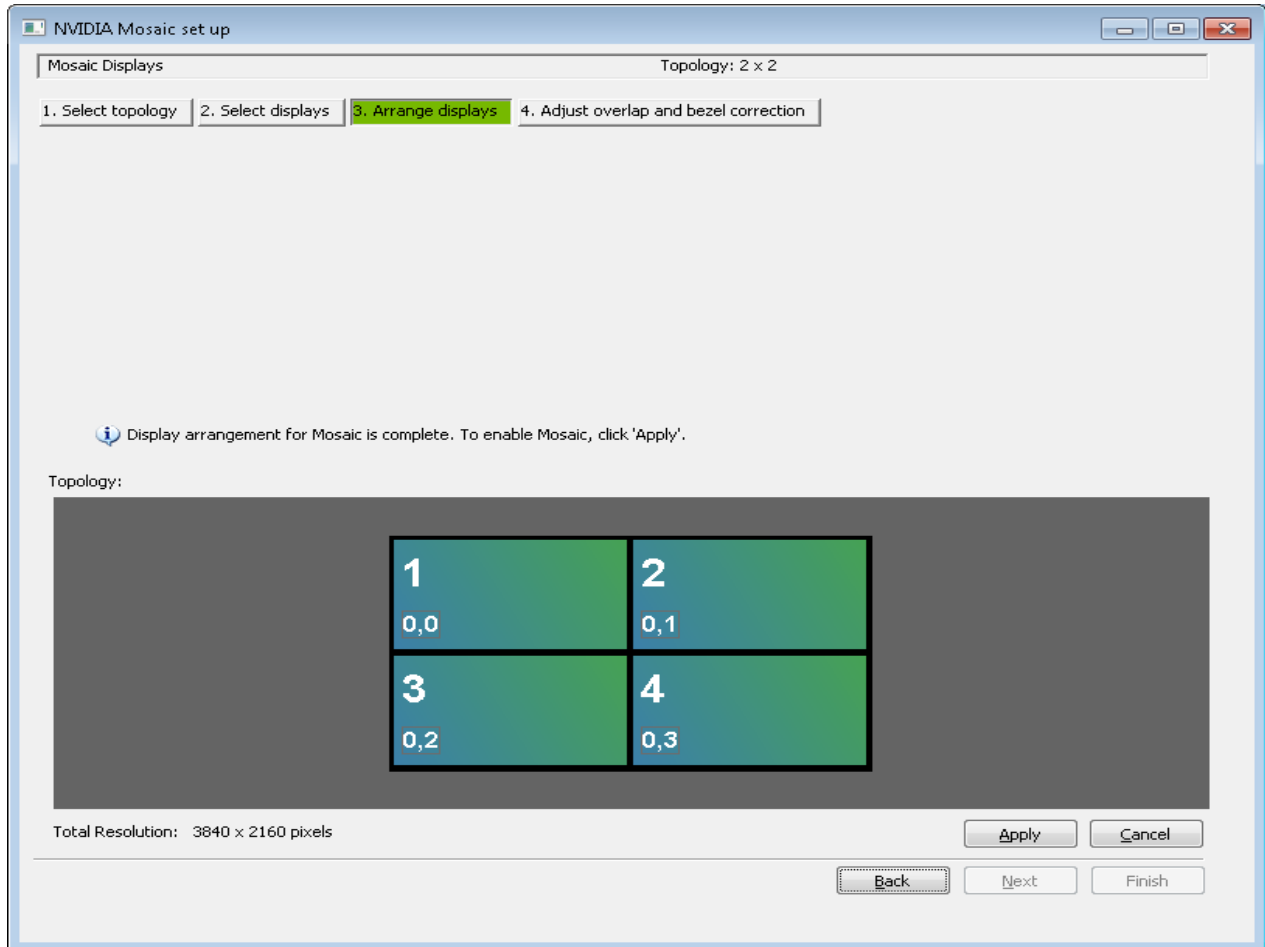


Click **Next** and move on to Arranging Displays in your Topology as shown below

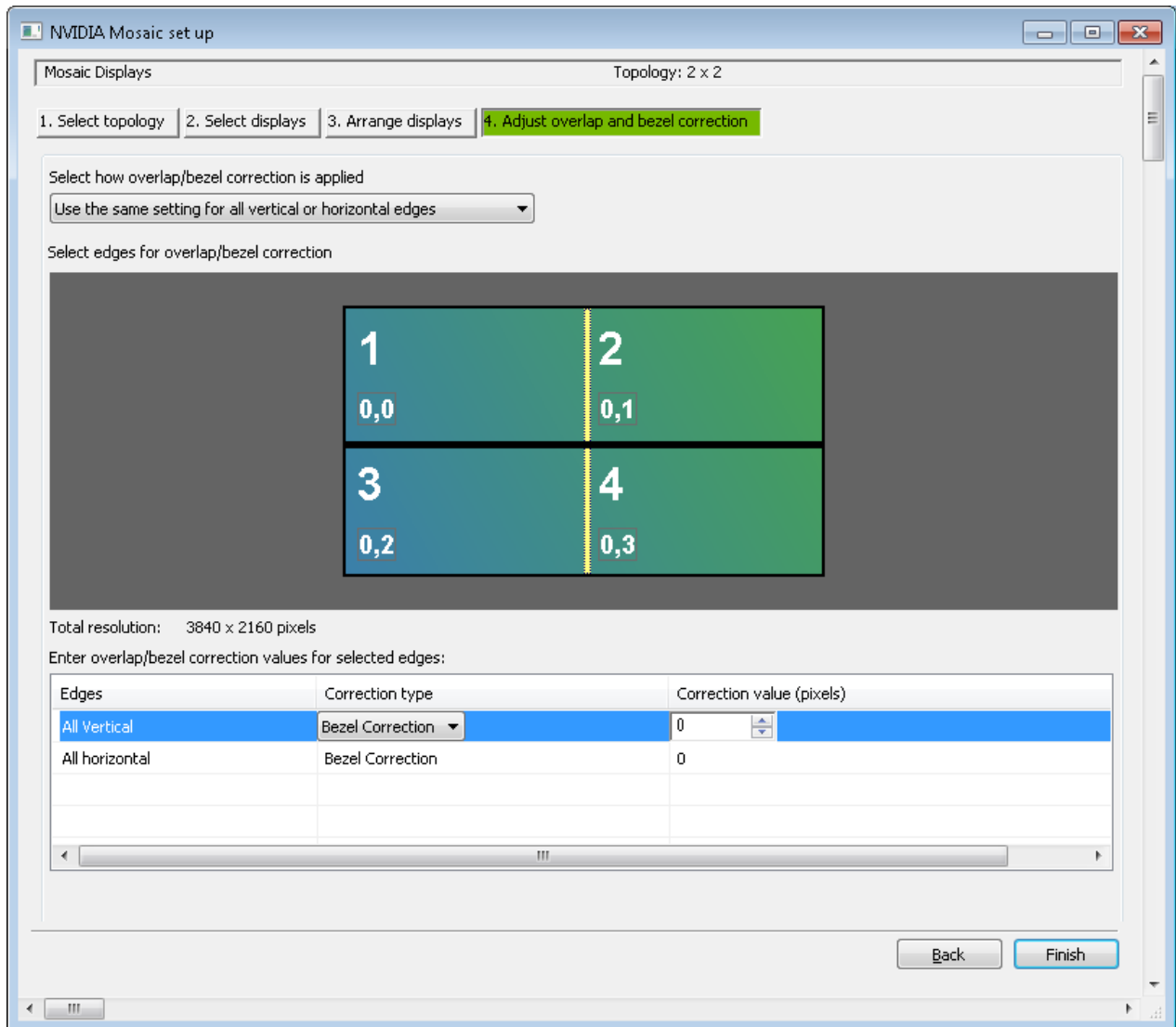


Drag and Drop Displays according to your Topology requirements and

Click **Apply** and Click **Next** when Topology is applied



Adjust the overlap and bezel correction looking at the display monitors and Click **Finish**

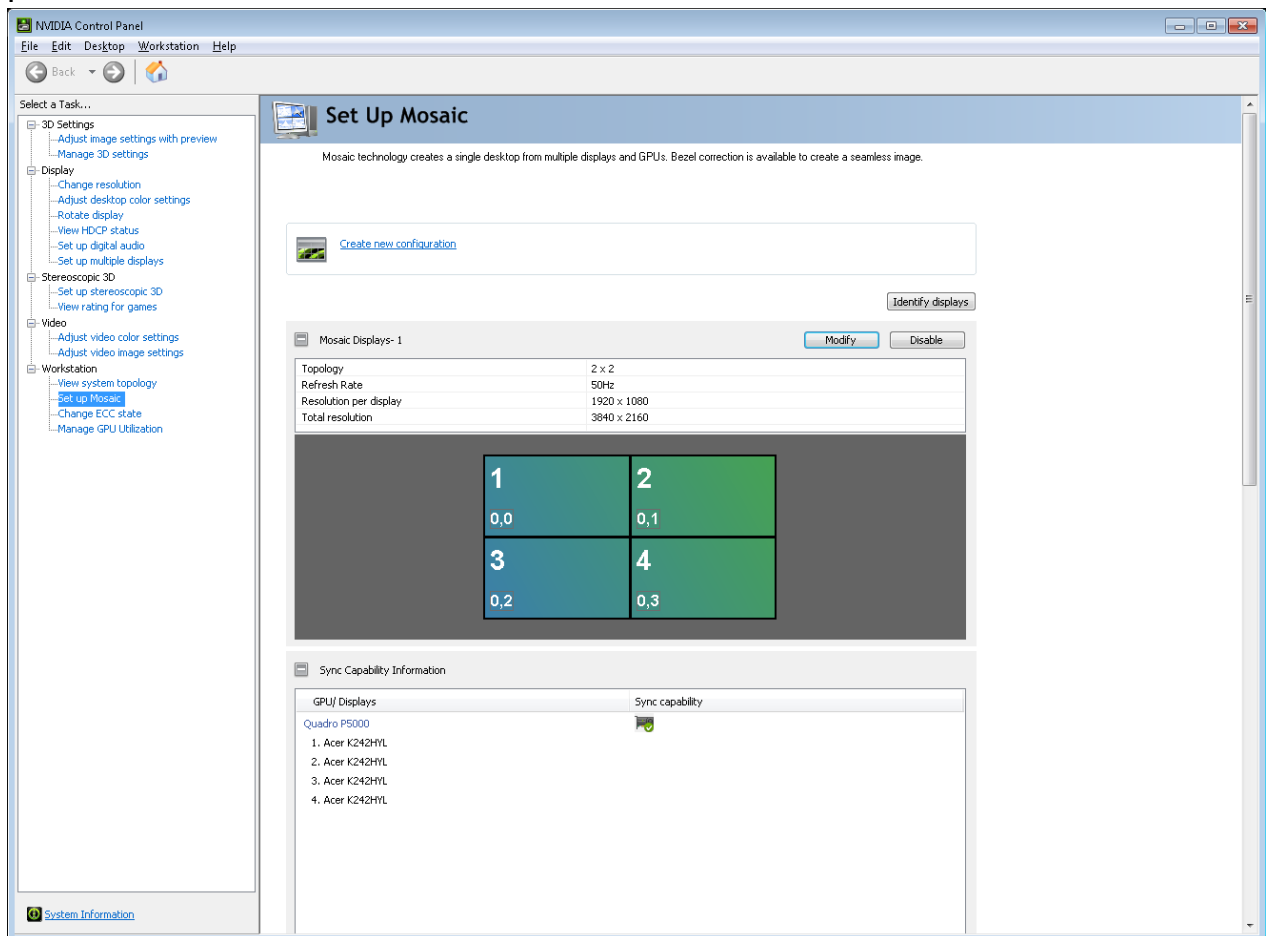


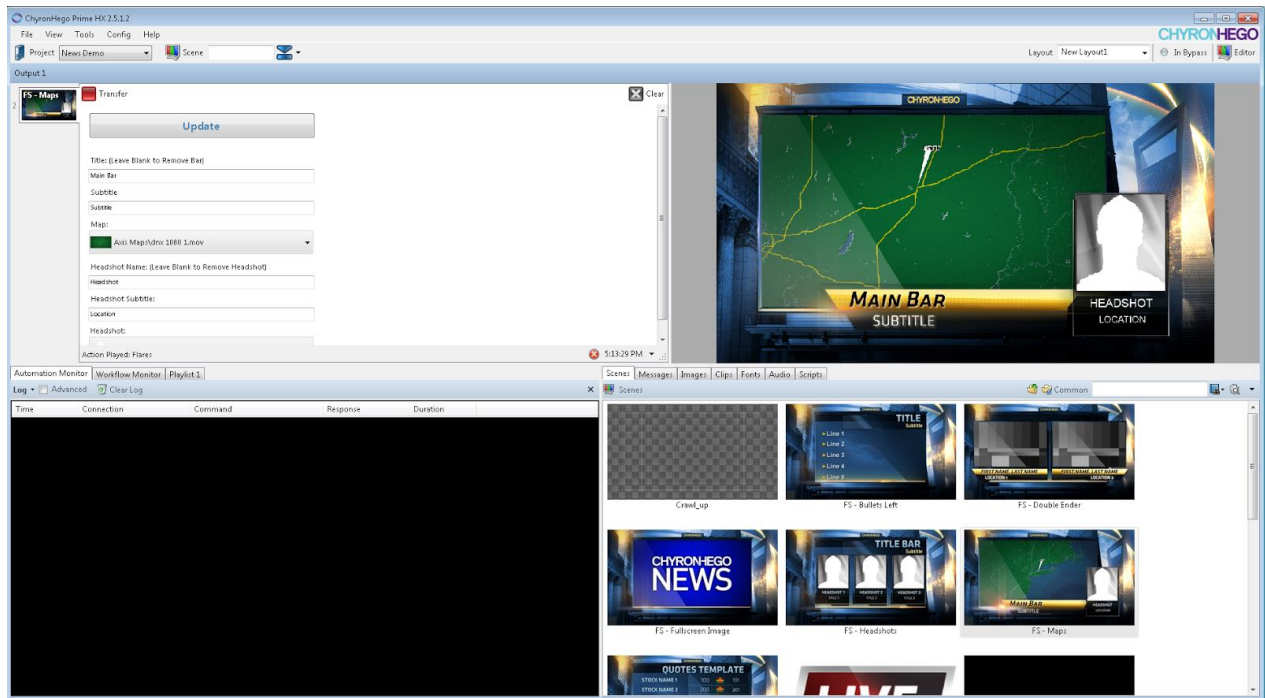
Final Mosaic Setup has been applied that lists all the properties of your Topology



One can Click on **Modify** and Modify the Topology to make any changes required or **Disable** the

Mosaic Setup to go back to default settings.





Launch Prime Application and Play any Scene on the Output channel ,it should display the Graphic across all those 4 Display devices